

INSTRUMENT CATHODE-RAY TUBE

14 cm diagonal, rectangular flat faced oscilloscope tube with post-deflection acceleration mesh, primarily intended for use in compact oscilloscopes with 15 to 20 MHz bandwidth. This tube features a 1,5 W cathode with short warm-up time (quick-heating cathode).

QUICK REFERENCE DATA

Final accelerator voltage	$V_{g7(\ell)}$	4 kV
Display area		100 x 80 mm ²
Deflection coefficient		
horizontal	M_x	19,5 V/cm
vertical	M_y	10,5 V/cm

OPTICAL DATA

Screen		metal-backed phosphor
type		GH, colour green
persistence		medium short
Useful screen dimensions	\geq	100 x 80 mm ²
Useful scan		
horizontal	\geq	100 mm
vertical	\geq	80 mm
Spot eccentricity in horizontal and vertical directions	\leq	6,5 mm

HEATING

Indirect by a.c. or d.c.; parallel supply

Heater voltage	V_f	6,3 V
Heater current	I_f	240 mA

MECHANICAL DATA

Mounting position: any

The tube should not be supported by the base alone and under no circumstances should the socket be allowed to support the tube.

Net mass		approx. 1050 g
Base		14-pin, all glass
Final accelerator contact		small ball (JEDEC J1-25)

blue binder, tab 4



Dimensions and connections

See also outline drawing

Overall length	≤	333 mm
Face dimensions	≤	100 x 120 mm ²

Accessories

Socket, supplied with tube	type 55566
Mu-metal shield	type 55591
Final accelerator contact connector	type 55569

FOCUSING

electrostatic

DEFLECTION

double electrostatic

x-plates symmetrical

y-plates symmetrical

Angle between x and y-traces $90 \pm 1^\circ$ Angle between x-trace and horizontal axis of the face $\leq 5^\circ$ *

If use is made of the full deflection capabilities of the tube the deflection plates will block part of the electron beam, hence a low impedance deflection plate drive is desirable.

CAPACITANCES

x ₁ to all other elements except x ₂	C _{x1(x2)}	7 pF
x ₂ to all other elements except x ₁	C _{x2(x1)}	6,5 pF
y ₁ to all other elements except y ₂	C _{y1(y2)}	4 pF
y ₂ to all other elements except y ₁	C _{y2(y1)}	3,5 pF
x ₁ to x ₂	C _{x1x2}	2,2 pF
y ₁ to y ₂	C _{y1y2}	1,1 pF
Control grid to all other elements	C _{g1}	6,1 pF
Cathode to all other elements	C _k	2,7 pF

* The tube is provided with a rotation coil, concentrically wound around the tube neck, enabling the alignment of the x-trace with the mechanical x-axis of the screen. The coil has 1000 turns and a resistance of max. 400 Ω. Under typical operating conditions, max. 30 ampere-turns are required for the max. rotation of 5°. This means the required current is max. 30 mA at a required voltage of max. 12 V.

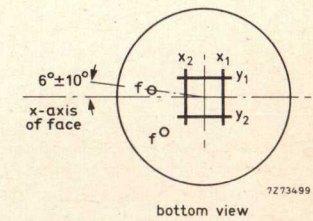
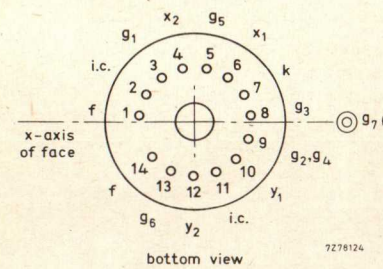
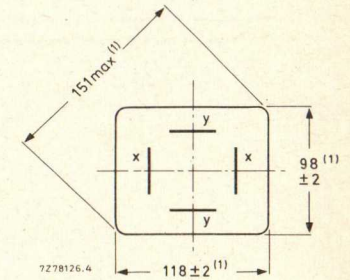
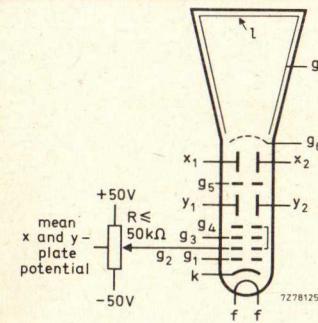
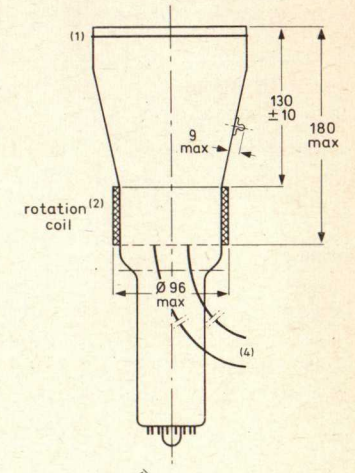
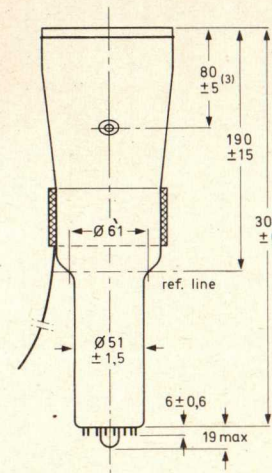
Notes to the drawings on opposite page.

1. The bulge at the frit seal may increase the indicated maximum dimensions by not more than 2 mm.
2. The coil is fixed to the envelope by means of adhesive tape.
3. The centre of the contact is situated within a square of 10 mm x 10 mm around the true geometrical position.
4. The length of the connecting leads of the rotation coil is min. 350 mm.

DIMENSIONS AND CONNECTIONS

Dimensions in mm

For notes to the drawings see bottom of opposite page.



TYPICAL OPERATION

Conditions

Final accelerator voltage	$V_{g7(\ell)}$	4 kV	
Post deflection accelerator mesh electrode voltage	V_{g6}	2000 V	
Interplate shield voltage	V_{g5}	2000 V	(note 1)
First accelerator voltage	$V_{g2, g4}$	2000 V	
Astigmatism control electrode voltage	$\Delta V_{g2, g4}$	± 50 V	(note 2)
Focusing electrode voltage	V_{g3}	300 to 480 V	
Control grid voltage for visual extinction of focused spot	V_{g1}	-30 to -70 V	

Performance

Useful scan		\geq	100 mm	} (note 3)
Deflection coefficient		\geq	80 mm	
horizontal	M_x	\leq	19,5 V/cm	
			21,5 V/cm	
vertical	M_y	\leq	10,5 V/cm	
			11,6 V/cm	
Line width	l.w.	\approx	0,35 mm	(note 4)
Deviation of linearity of deflection		\leq	2 %	(note 5)
Grid drive for 10 μ A screen current		\approx	20 V	
Geometry distortion				see note 6

LIMITING VALUES (Absolute maximum rating system)

Final accelerator voltage	$V_{g7(\ell)}$	max.	4,4 kV
		min.	3 kV
Post deflection accelerator mesh electrode voltage	V_{g6}	max.	2200 V
Interplate shield voltage	V_{g5}	max.	2200 V
First accelerator and astigmatism control electrode voltage	$V_{g2, g4}$	max.	2200 V
		min.	1500 V
Focusing electrode voltage	V_{g3}	max.	2200 V
Control grid voltage	$-V_{g1}$	max.	200 V
		min.	0 V
Cathode to heater voltage		positive	V_{kf} max. 125 V
		negative	$-V_{kf}$ max. 125 V
Grid drive, average		max.	20 V
Screen dissipation	W_{ℓ}	max.	3 mW/cm ²
Control grid circuit resistance	R_{g1}	max.	1 M Ω

NOTES

- The interplate shield voltage should be equal to the mean x-plate potential. The mean x-plate and y-plate potentials should be equal for optimum spot quality.
- The astigmatism control electrode voltage should be adjusted for optimum spot shape. For any necessary adjustment its potential will be within the stated range.
- The tube is designed for optimum performance when operating at a ratio $V_{g7(\ell)}/V_{g2, g4} = 2$. If this ratio is smaller than 2, the useful scan may be smaller than 100 mm x 80 mm.
- Measured with the shrinking raster method in the centre of the screen with corrections adjusted for optimum spot size, at a beam current of 10 μ A.
- The sensitivity at a deflection of less than 75% of the useful scan will not differ from the sensitivity at a deflection of 25% of the useful scan by more than the indicated value.
- A graticule consisting of concentric rectangles of 95 mm x 75 mm and 93 mm x 73 mm is aligned with the electrical x-axis of the tube. With optimum corrections applied, the edges of a raster will fall between these rectangles.