

BULLETIN 1184B

33 PAGE PRINTER SET

(ASR, KSR AND RO)

PARTS



TELETYPE[®]
CORPORATION

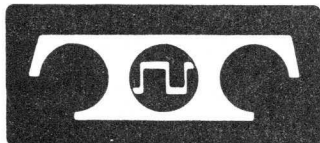
5555 TOUHY AVENUE, SKOKIE, ILLINOIS

BULLETIN 1184B

33 PAGE PRINTER SET

(ASR, KSR AND RO)

PARTS



TELETYPE[®]
CORPORATION

5555 TOUHY AVENUE, SKOKIE, ILLINOIS



TABLE OF CONTENTS

SECTION	TITLE	ISSUE	DATE
574-121-800TC	33 Keyboard (UK)	6	August 1972
574-122-800TC	33 Typing Unit (UP)	*9	March 1973
574-123-800TC	33 Call Control Unit (UCC)	*8	March 1973
574-124-800TC	33 Reader (UX)	5	August 1972
574-125-800TC	33 Tape Punch (UPE)	5	August 1972
574-126-800TC	33 Cover and Table	*7	March 1973

*Indicates revised sections



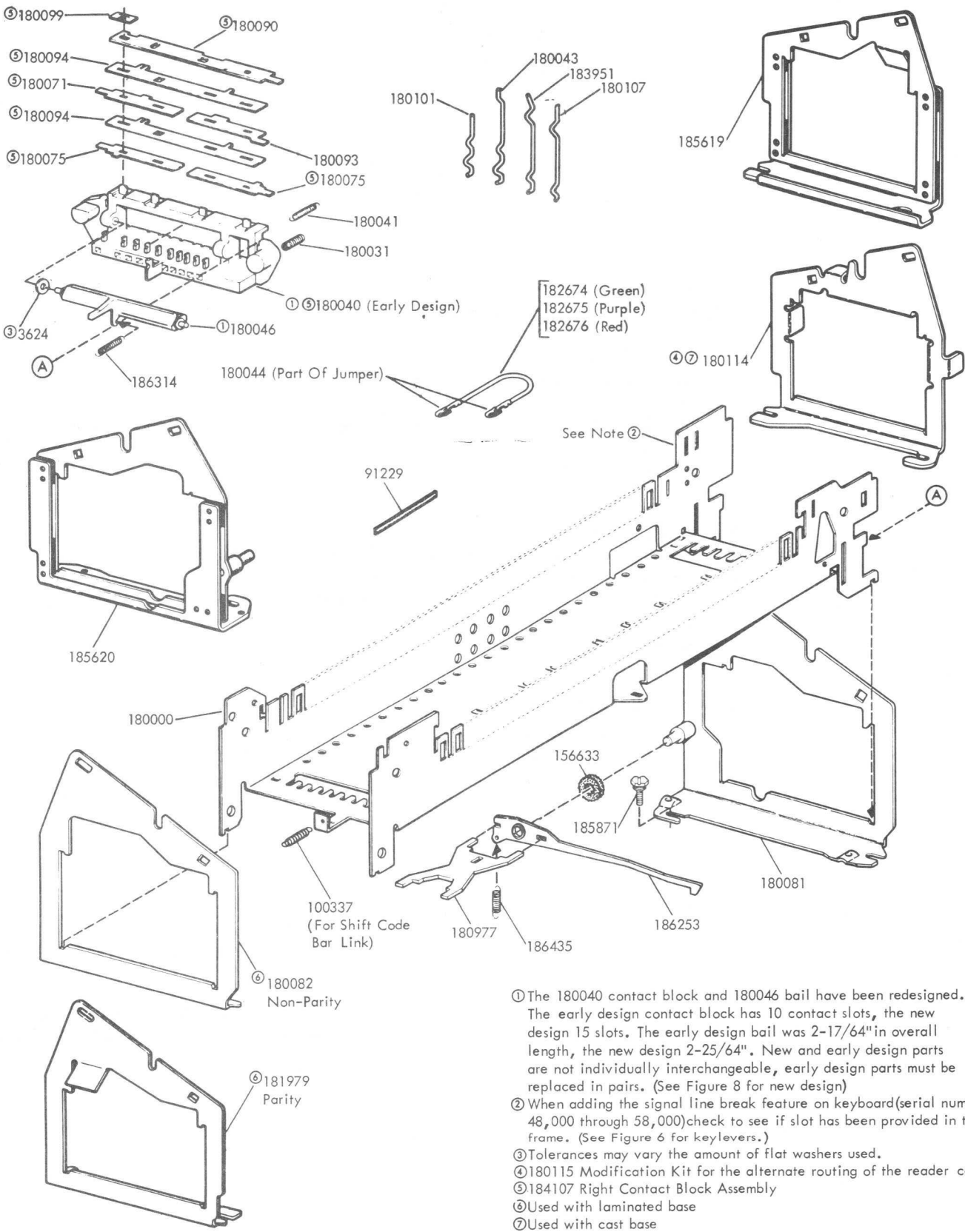
33 KEYBOARD (UK)

PARTS

FIGURE	CONTENTS	PAGE
1	Keyboard Basket and Contact Block	2
2	186752 Modification Kit to provide locking for Keyboard (Early Design)	3
3	186752 Modification Kit to provide locking for Keyboard (Later Design)	3
4	Keyboard Covers	4
5	Keytops	5
6	Keylevers	6
7	Codebar Mechanism	7
8	Codebar Mechanism for Units Equipped with Even Parity	8
9	Codebar Mechanism for Numeric Keyboard	9
10	Reset Mechanism for Self-Contained and Solenoid Reset Keyboards	10
11	Reset Mechanism for Even Parity Keyboard	11
12	Cover for Self-Contained and Solenoid Reset Keyboards	12
13	Cable Components	13
14	185801 Modification Kit to Provide Locking for Keyboard	14
	Numerical Index	15

** Denotes a Painted Part
HF - Light Olive Gray Smooth Vinyl

NOTE: Refer to Section 574-020-800
for Additional 33 Key Tops Descriptions.



- ① The 180040 contact block and 180046 bail have been redesigned. The early design contact block has 10 contact slots, the new design 15 slots. The early design bail was 2-17/64" in overall length, the new design 2-25/64". New and early design parts are not individually interchangeable, early design parts must be replaced in pairs. (See Figure 8 for new design)
- ② When adding the signal line break feature on keyboard(serial numbers 48,000 through 58,000)check to see if slot has been provided in the frame. (See Figure 6 for keylevers.)
- ③ Tolerances may vary the amount of flat washers used.
- ④ 180115 Modification Kit for the alternate routing of the reader cable
- ⑤ 184107 Right Contact Block Assembly
- ⑥ Used with laminated base
- ⑦ Used with cast base

FIGURE 1. KEYBOARD BASKET AND CONTACT BLOCK

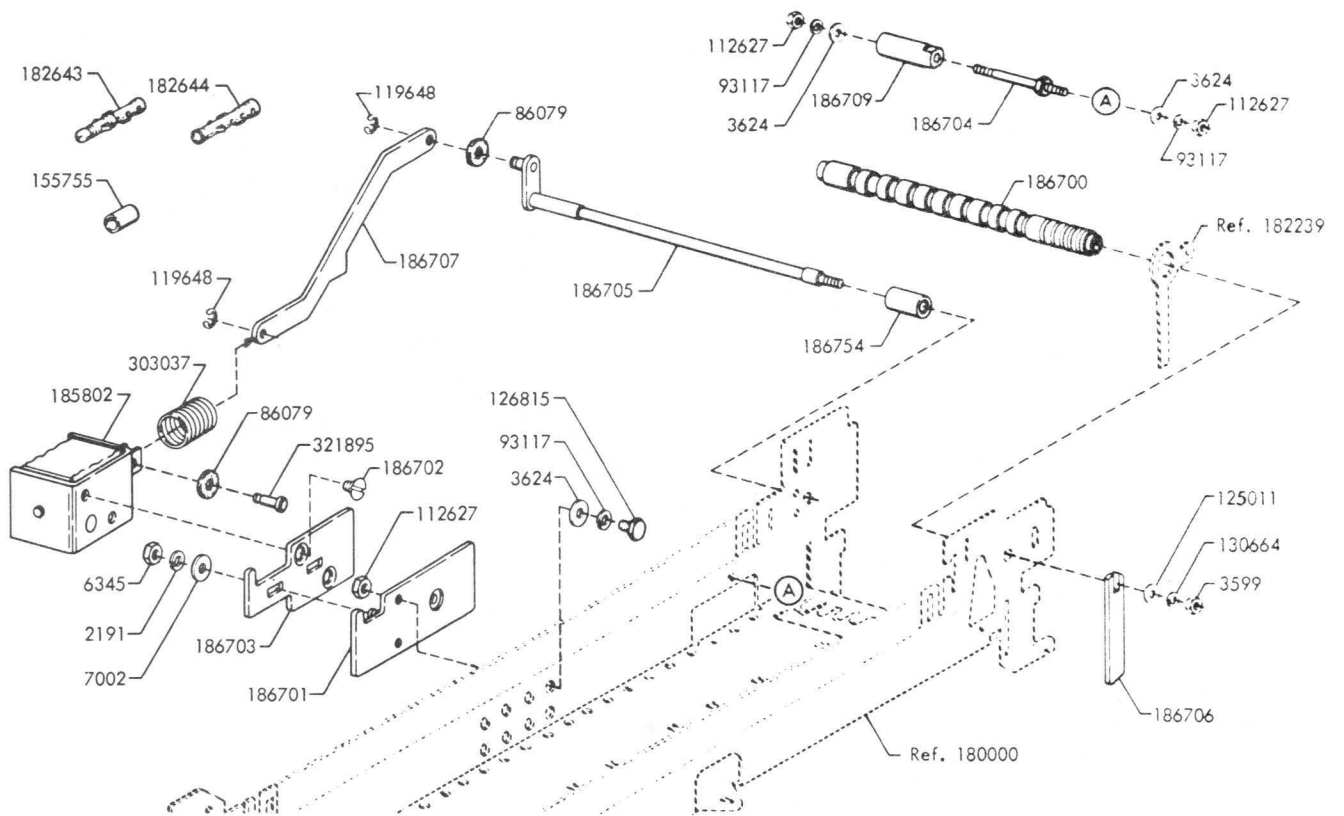


FIGURE 2. 186752 MODIFICATION KIT TO PROVIDE LOCKING FOR KEYBOARD (EARLY DESIGN)

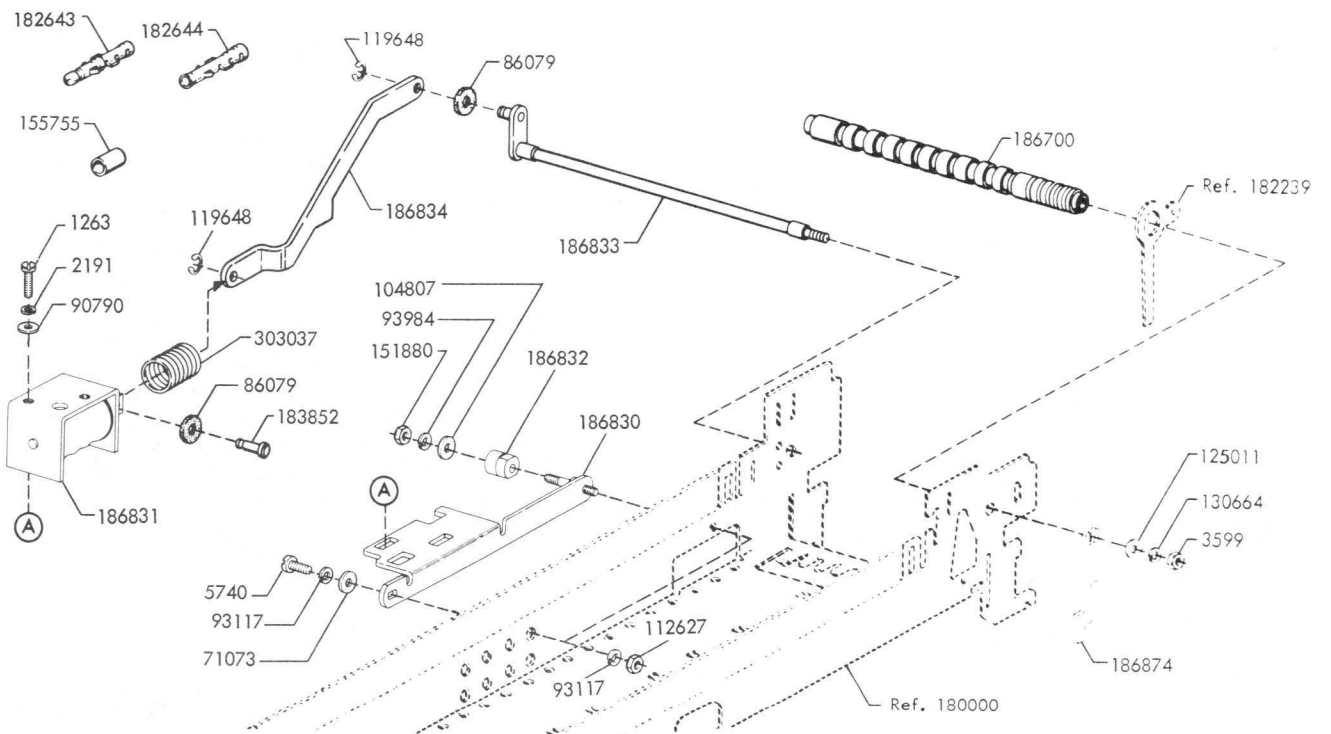


FIGURE 3. 186752 MODIFICATION KIT TO PROVIDE LOCKING FOR KEYBOARD (LATER DESIGN)

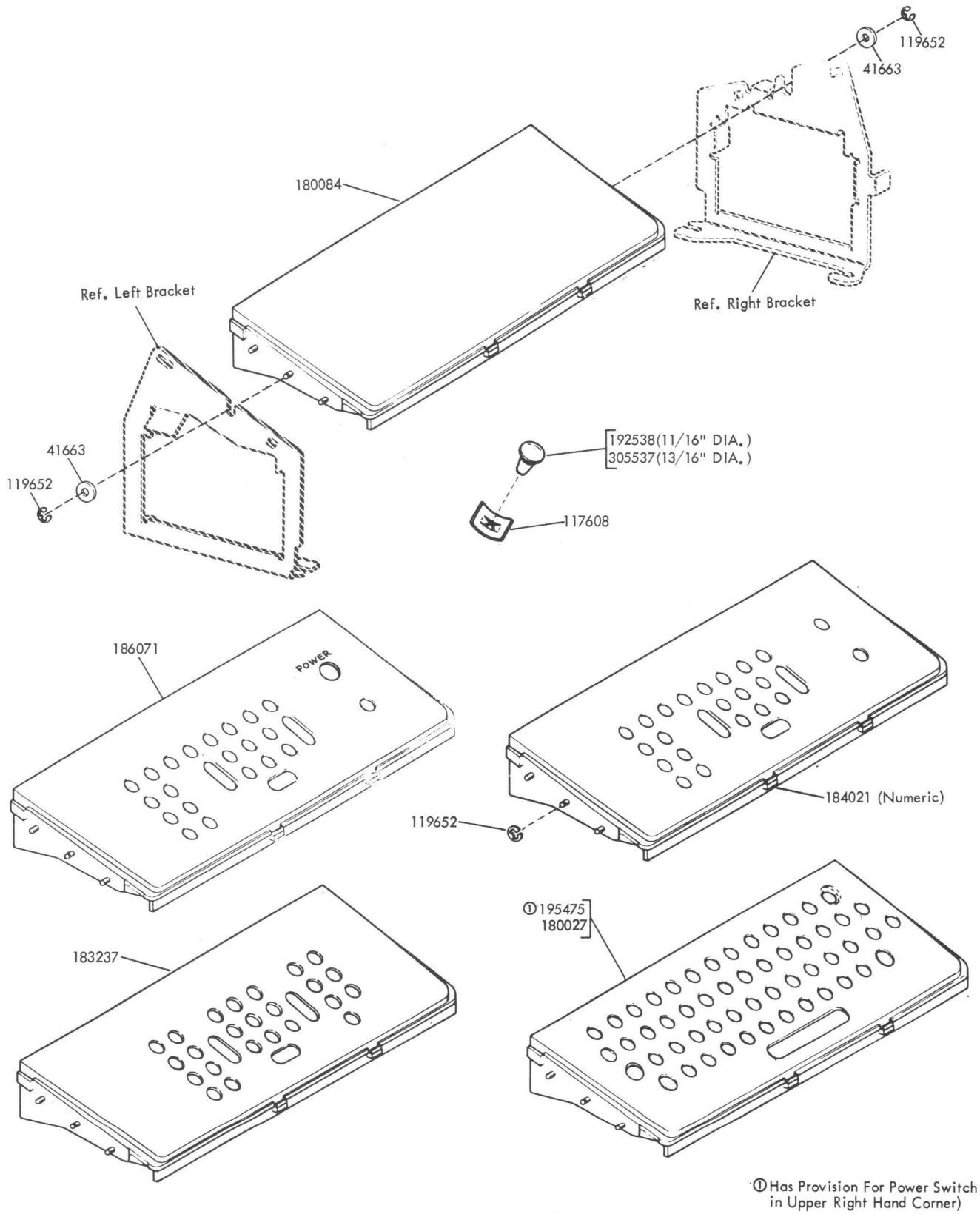
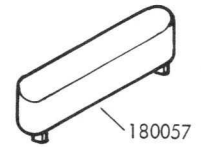
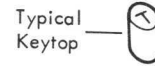
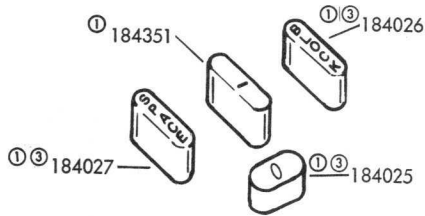


FIGURE 4. KEYBOARD COVERS



Keytop Description			Keytop Description			Keytop Description		
UNSHIFT	SHIFT	Part Number	UNSHIFT	SHIFT	Part Number	UNSHIFT	SHIFT	Part Number
A		180181	P	@	180180	8		①③ 184341
A	SOM	*183891	Q		180171	9)	180168
A		①③ 184343	Q	X ON	*183888	9		①③ 184342
B		180194	Q	X-ON	184869	0		180169
B		①③ 184344	Q	RLF	185160	∅		180374
C		180192	R	TAPE	180174	-	=	180170
C		①③ 184345	R		180260	,	<	180197
C	ETX	185165	R	FS	185161	.	>	180198
D	EOT	180183	S		180282	;	+	180199
D		180278	S	X OFF	180182	/	?	180200
D		①③ 184346	S	X OFF	*183892	:	*	180205
E	WRU	180173	S		③ 185394	(No Symbol)		① 180297
E		180259	T	TAPE	180175	-		180336
E	WRU	*183889	T		180261		*	180335
F	RU	180184	T	PR	185162		,	180418
F		180273	T		③ 185395		.	180419
G	BELL	180185	U		180177	/	■	184895
G		180274	V		180193	RUB OUT		①③ 180201
G	BELL	*183890	W		180172	RETURN		①③ 180202
H		180186	X		180191	LINE FEED		①③ 180203
H	BS	185163	X		③ 185396	HERE IS		180206
I	TAB	180178	Y		180176	BREAK		180207
I		180262	Z		180190	REPT		①③ 180208
J		180187	1	!	180160	ALT MODE		180257
K	VT	180188	1		①③ 184334	ESC		180382
K		180280	1		180264	EOT		①③ 180440
K	I	185090	2	"	180161	DIV		① 180441
L	FORM	180189	2		①③ 184335	STORE		① 180442
L		180281	3	#	180162	TYPE ORD		① 180443
L	\	180385	3		①③ 184336	SECT		① 180444
L	FORM	185164	4	\$	180163	SHIFT		180061
M		180196	4		①③ 184337	CTRL		181253
M	□	180384	5	%	180164	CTRL		② 181971
M	I	185093	5		①③ 184338	FS		① 184815
N	↑	180195	6	&	180165	GS		① 184816
N	BLK	185092	6		①③ 184339	RS		① 184817
N	^	185150	7	'	180166	US		① 184818
O	←	180179	7		①③ 184340	CLR KYBD		184734
O	└	185089	8	(180167	CTRL		185159
						TAB		180373

NOTE:
 All Keytops are gray with white characters except as noted.
 *Gray Keytops with yellow characters.
 ① Used on Numeric Keyboard.
 ② Used with parity control.
 ③ Used on Numeric Self-Contained Keyboard

FIGURE 5. KEYTOPS

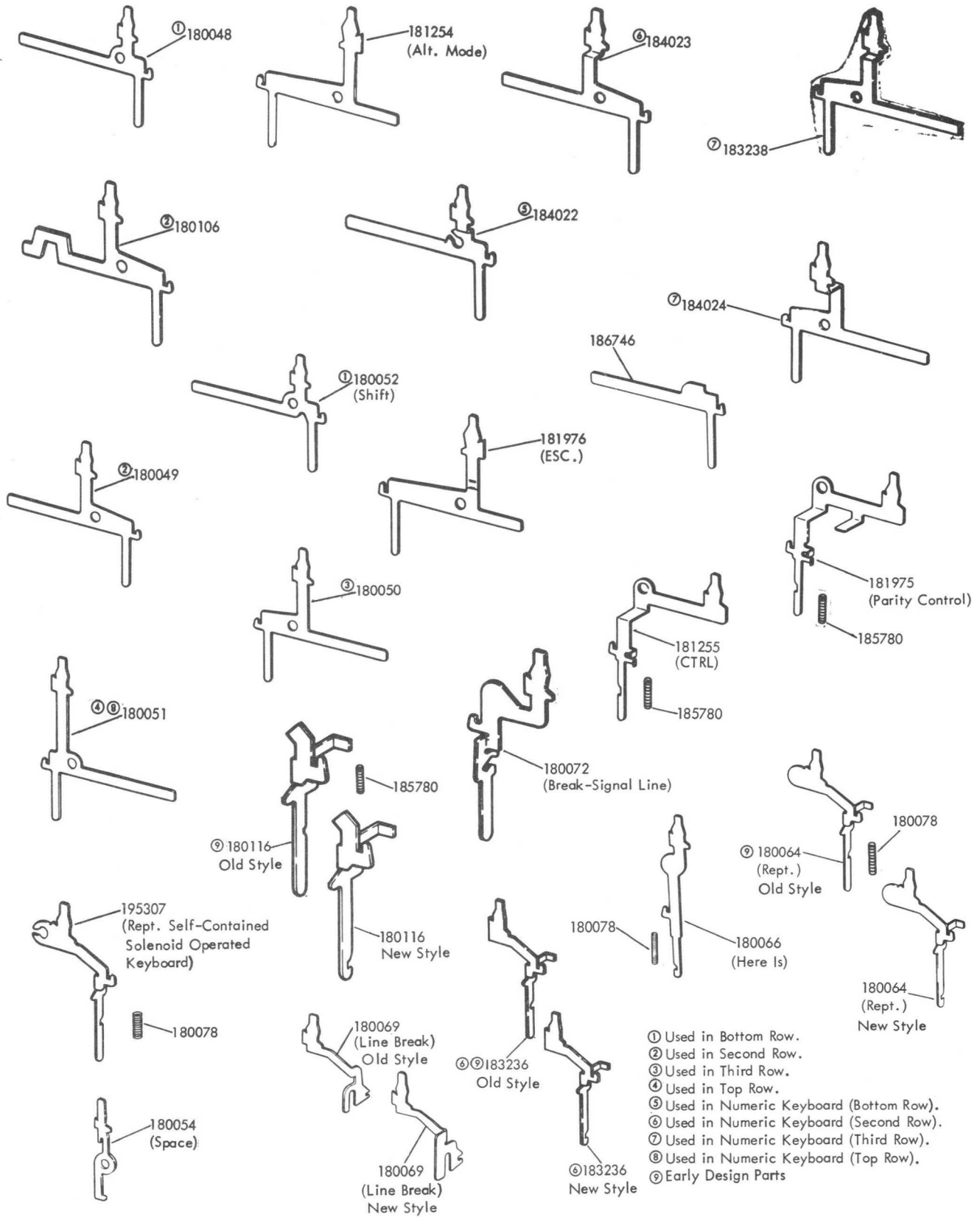


FIGURE 6. KEYLEVERS

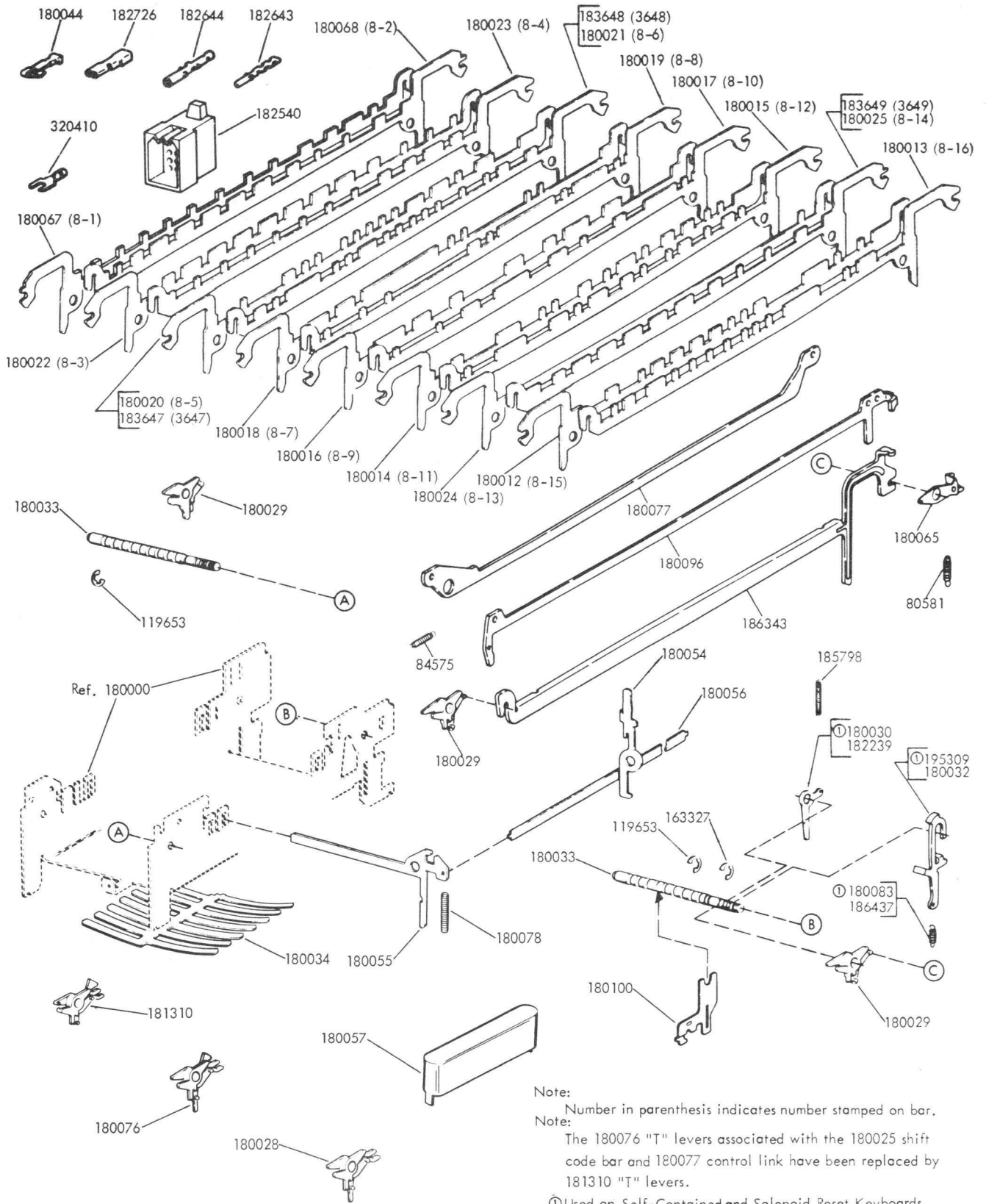


FIGURE 7. CODEBAR MECHANISM

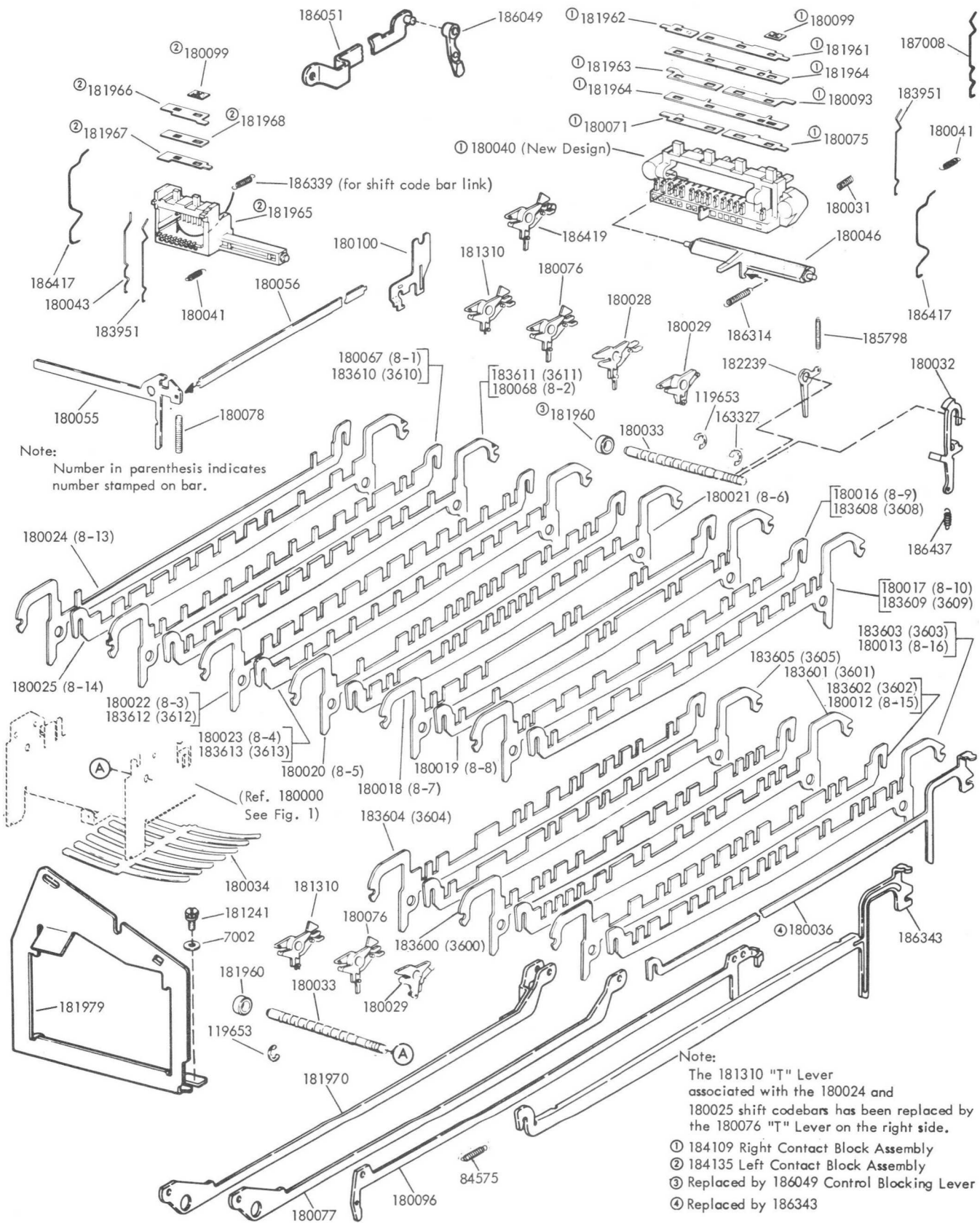


FIGURE 8. CODEBAR MECHANISM FOR UNITS EQUIPPED WITH EVEN PARITY

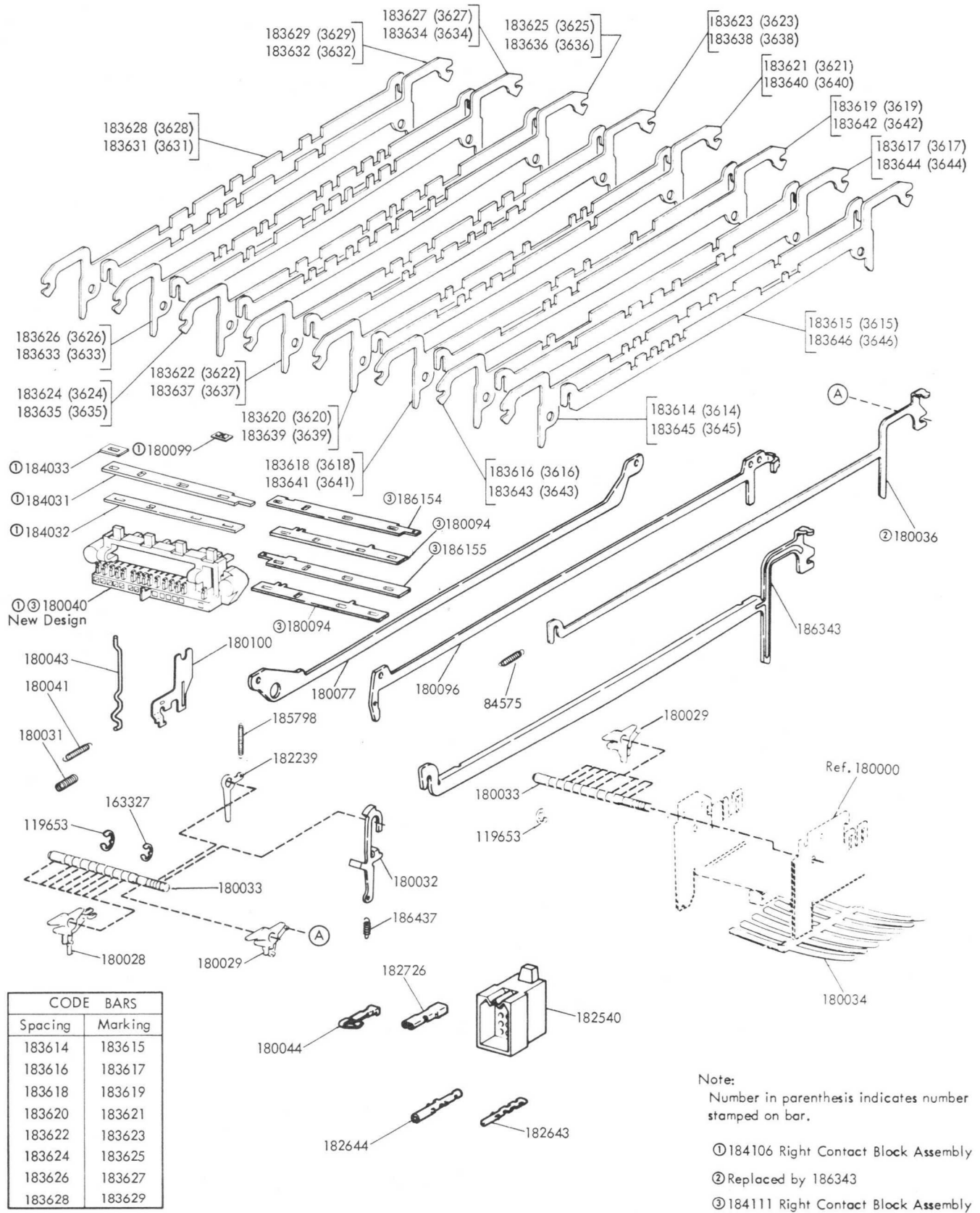


FIGURE 9. CODEBAR MECHANISM FOR NUMERIC KEYBOARD

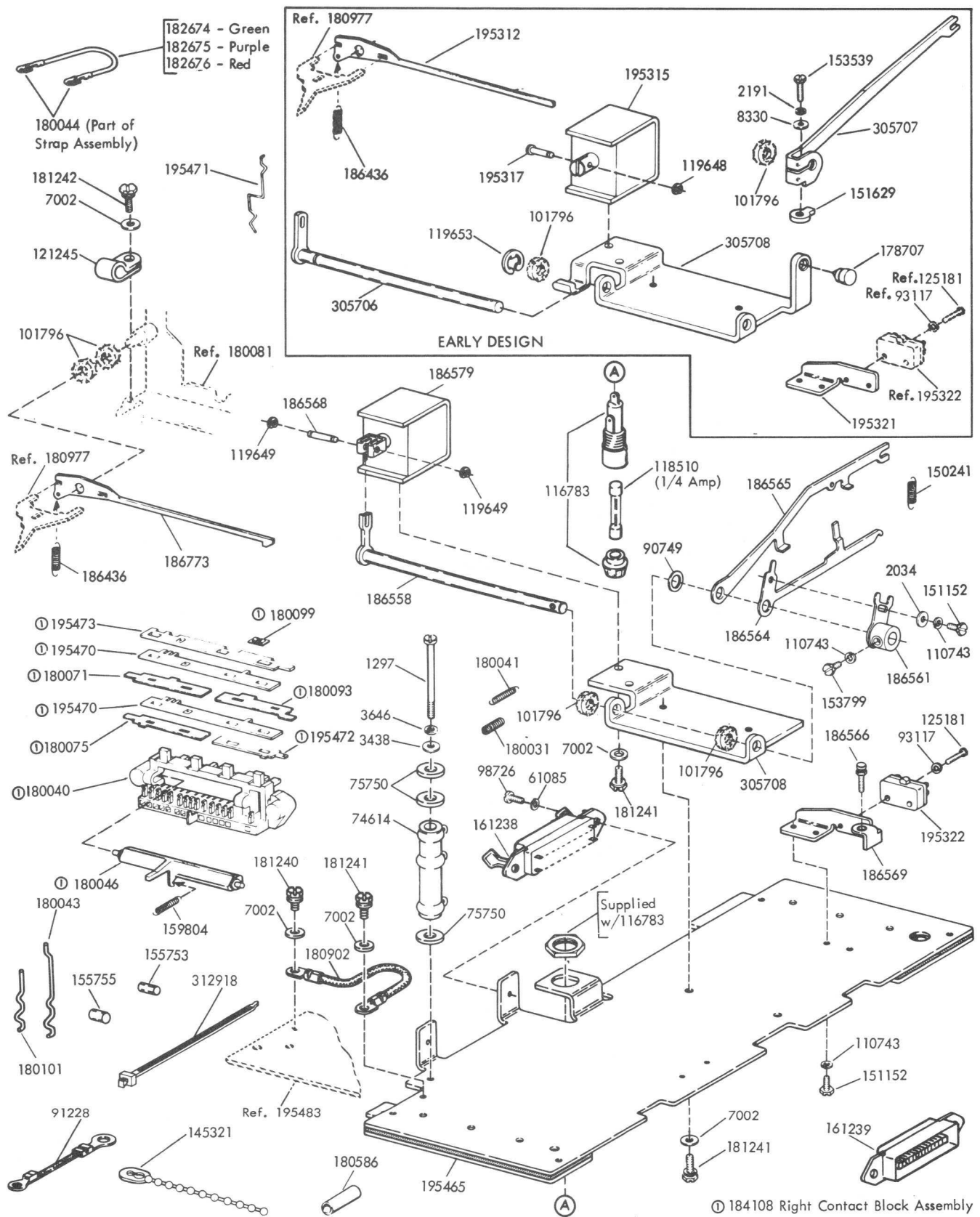


FIGURE 10. RESET MECHANISM FOR SELF-CONTAINED AND SOLENOID RESET KEYBOARDS

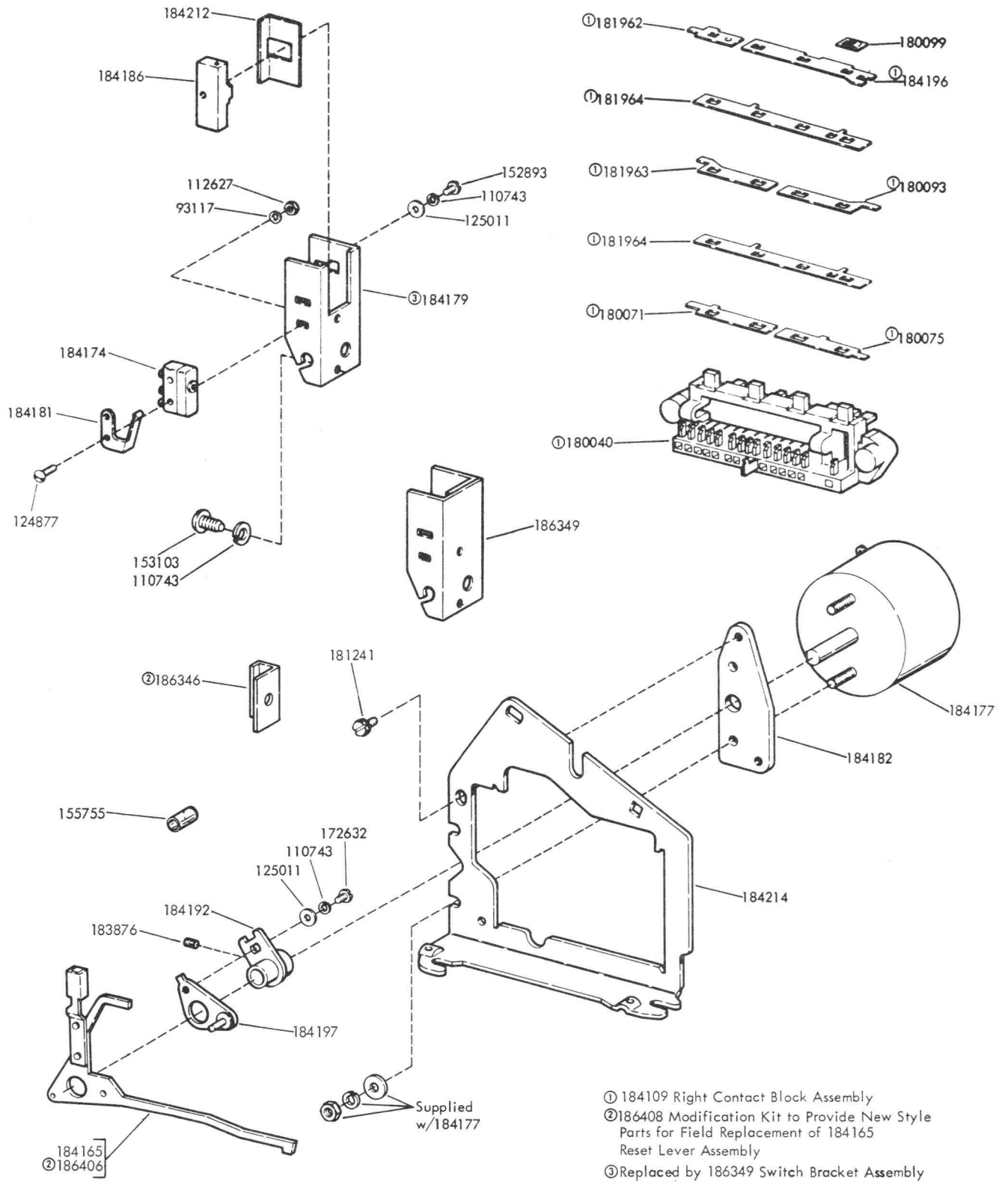
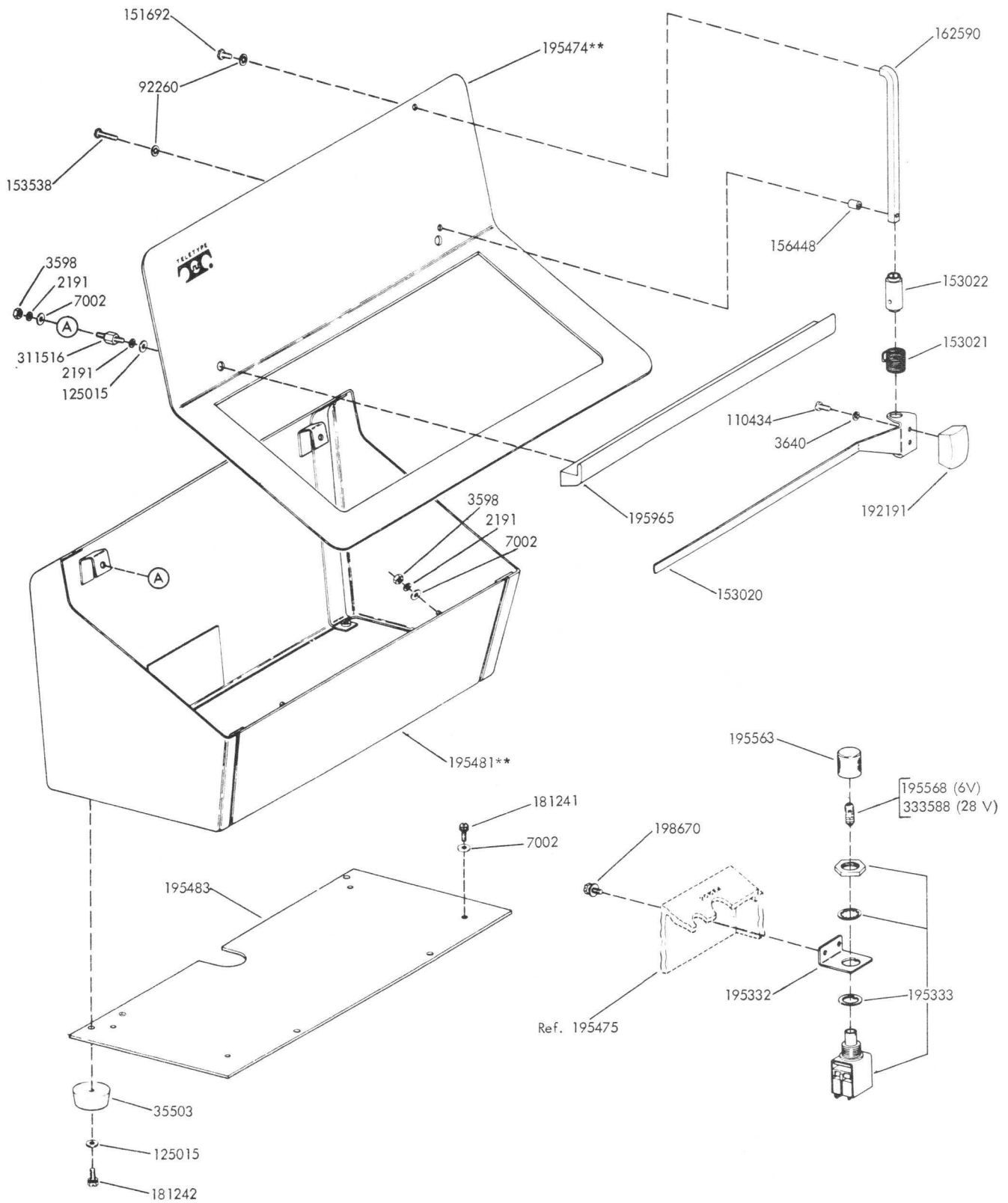


FIGURE 11. RESET MECHANISM FOR EVEN PARITY KEYBOARD

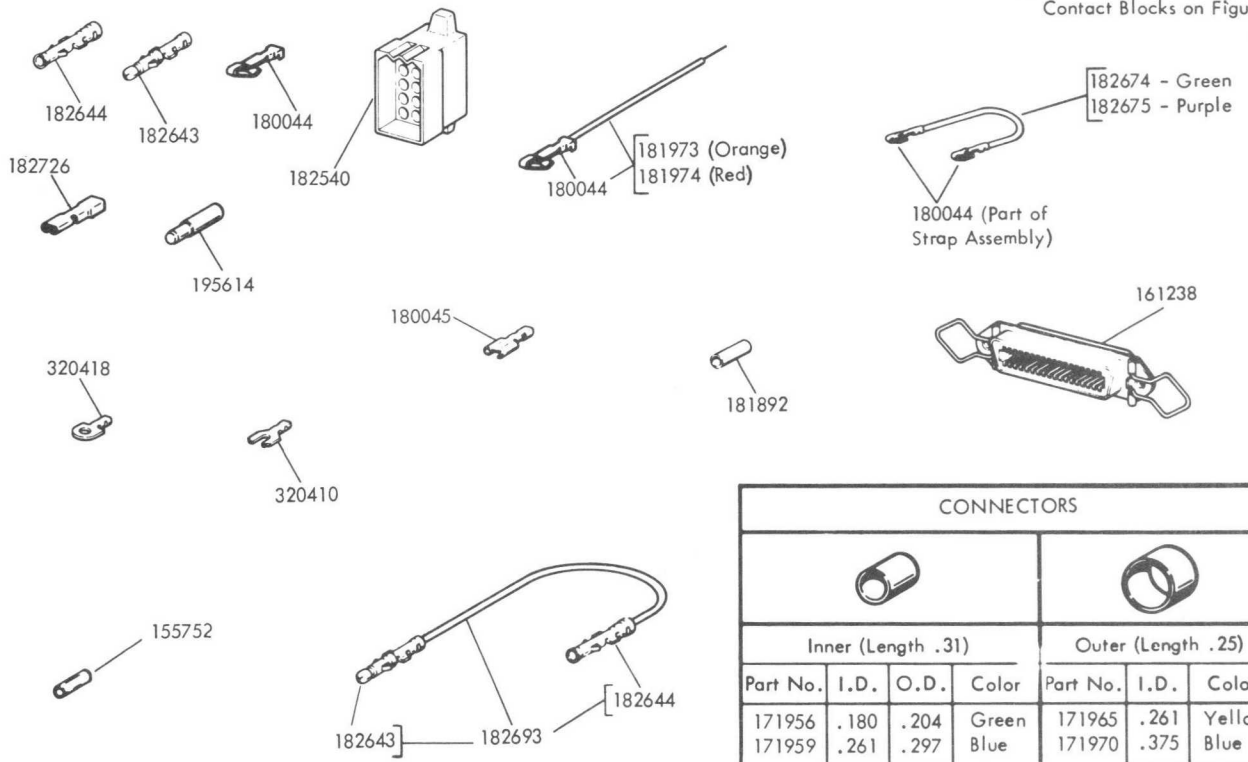


**Refer to Page 1 for Finish Suffix

FIGURE 12. COVER FOR SELF-CONTAINED AND SOLENOID RESET KEYBOARDS

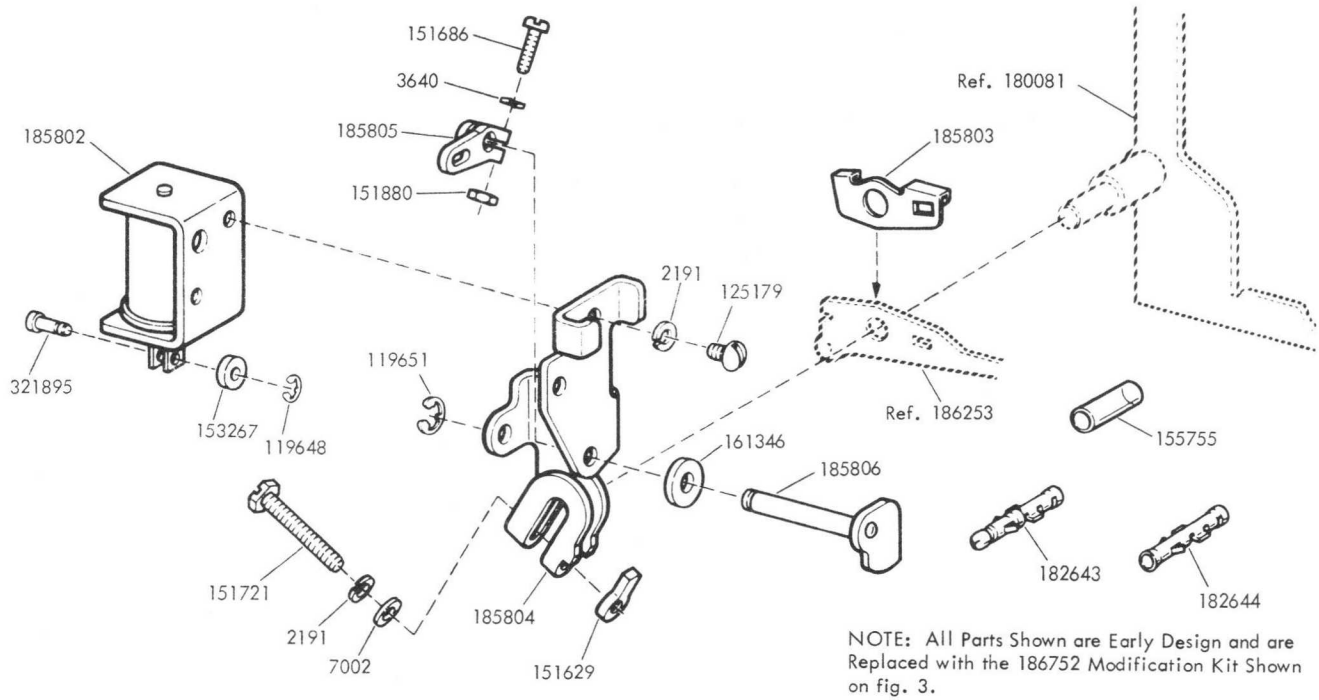
Components	CABLE ASSEMBLIES											
	180870	180908	181978	①181969	184034	184051	184198	184199	185845	186156	①187009	195482
320418									X			
155750			X						X			
155752										X		X
161238									X	X		X
171956							X					
171959								X				
171965							X					
171970								X				
180044	X	X	X	X	X	X	X	X	X	X	X	X
180045		X										
180586												X
181892								X				
181973			X				X					
181974			X				X					
182540	X		X	X	X	X		X			X	
182643	X		X	X	X	X	X	X			X	
182644	X		X	X	X	X		X			X	
182674				X							X	
182675				X							X	
182693					X	X						
182726	X	X	X	X	X	X	X	X	X	X	X	X
195614	X		X	X	X	X		X				
320410		X								X		X

① Includes 183135, 184109 Contact Blocks on Figure 8.



CONNECTORS						
Inner (Length .31)				Outer (Length .25)		
Part No.	I.D.	O.D.	Color	Part No.	I.D.	Color
171956	.180	.204	Green	171965	.261	Yellow
171959	.261	.297	Blue	171970	.375	Blue

FIGURE 13. CABLE COMPONENTS



NOTE: All Parts Shown are Early Design and are Replaced with the 186752 Modification Kit Shown on fig. 3.

FIGURE 14. 185801 MODIFICATION KIT TO PROVIDE LOCKING FOR KEYBOARD