

—Standard Valves—

4008-B
Valve

4008-B VALVE

HALF WAVE WATER COOLED RECTIFIER.

SPECIFICATION.

Cathode.

Pure Tungsten filament.
Constant voltage type.

Water Jacket.

Type MS.1362 Grp. 1 for anode dissipation
up to 6 Kw.
Type 223 LU.1A for anode dissipation over
6 Kw.
Type MS.1362 Grp. 20 used for below panel
connection up to 6 Kw. anode dissipation.

Water Flow.

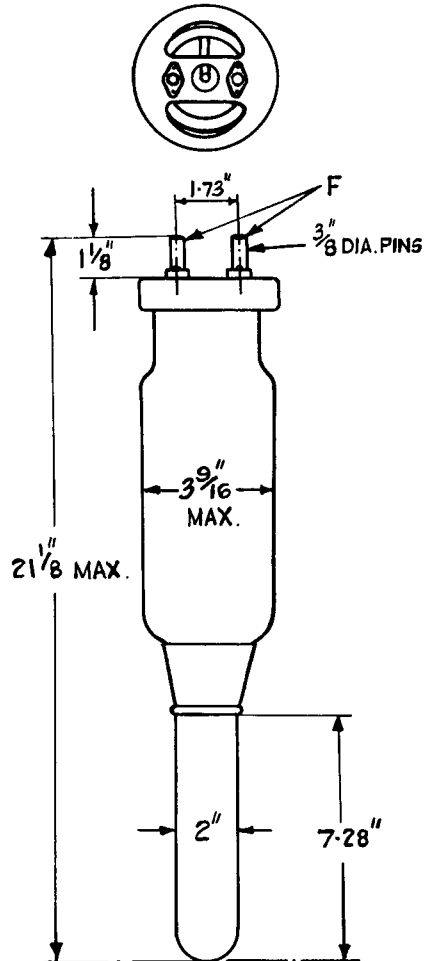
2 gallons per minute.

Dimensions.

Max. overall length $21\frac{1}{8}$ " (53.6 cms.).
Max. bulb diameter $3\frac{9}{16}$ " (9 cms.)
Net weight $3\frac{1}{2}$ lbs. (1,600 gms.)

Constants.

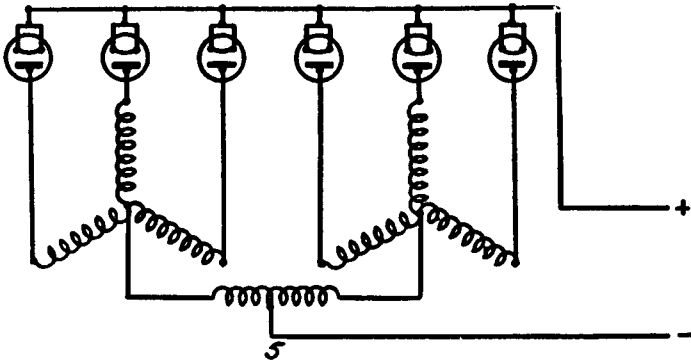
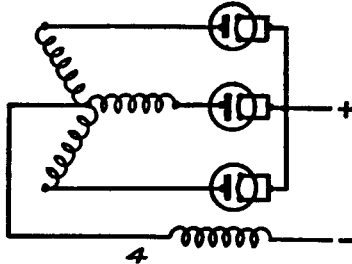
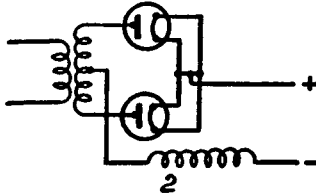
Filament voltage 18.5–19.5 volts
(exact filament voltage marked
on bulb of each valve)
Nominal filament current 59 amps.
Total emission 6 amps.
Maximum peak inverse
voltage 45,000 volts
Maximum anode dissipation 10 Kw.



—Standard Valves—

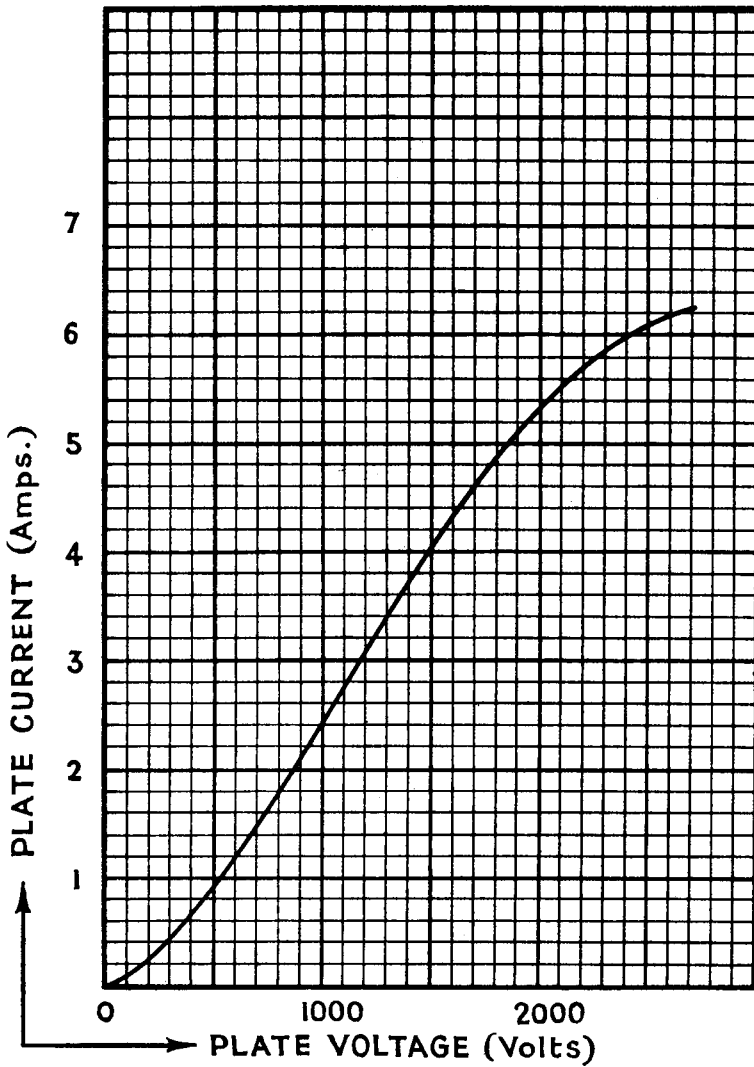
TYPICAL OPERATING CONDITIONS.

Circuit	Number of Valves	Load potential in volts	Load current in amps.
2	2	14,000	3.0
4	3	22,500	4.3
5	6	22,500	8.5



—Standard Valves—

4008-B
Valve



V.4008-B.2
March, 1939

PRINTED IN
ENGLAND