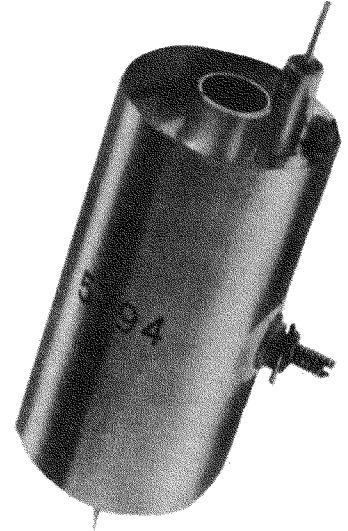


**DESCRIPTION: CW FIXED TUNED OSCILLATOR
TYPE 5794**

Pencil tube type 5794, designed for continuous wave operation, oscillates inside a cavity tuned to a fixed frequency of 1680 mc. This low Mu tube with its special heater at 5.2V is capable of delivering a power of 300 mw.



ELECTRICAL RATINGS

Heater Voltage	5.2 mAdc
Heater Current	146 mAdc
Max. Operation Frequency	1700 mc.
Max. Glass-to-Metal Seal Temp.	175°C

TUBE CHARACTERISTICS

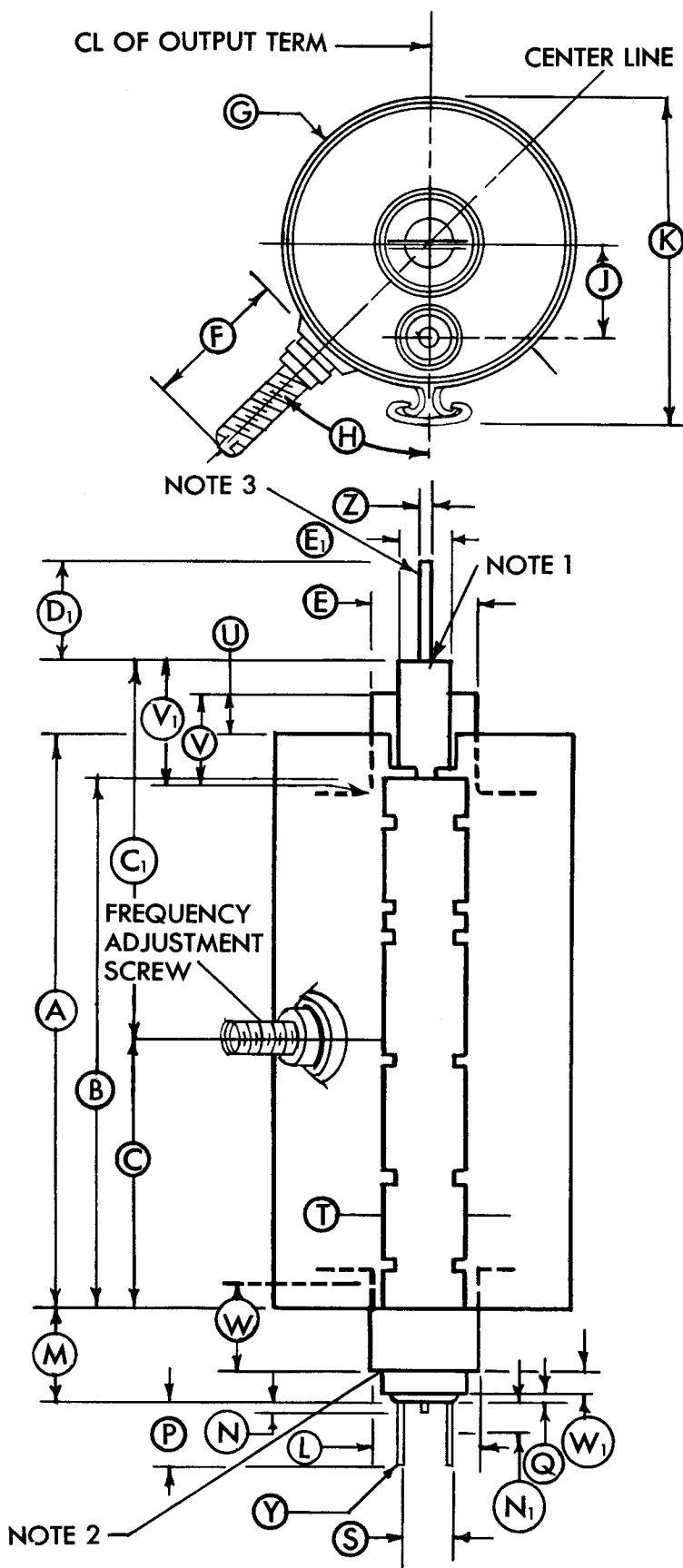
Heater Voltage	5.2 mAdc
Heater Current	146 mA
Oscillation Plate Current*	34 mAdc max.
Power Oscillation**	300 mW min.

*E _f = 6.6V	**E _b = 95Vdc
E _b = 117Vdc	R _g /I _b = 24 mAdc
	Z _L = 50 ohms
	F = 1670 ± 4mc

TYPICAL OPERATING CONDITIONS

Plate Voltage	95 V
Oscillation Plate Current	24 mAdc
(Adjust Cathode resistor for Plate Current)	
Power Output at 1700 mc	300 mW

SYLVANIA ELECTRIC PRODUCTS INC. ELECTRONICS DIVISION
1740 Broadway, New York 19, New York



REF.	DIMENSIONS
A	1.730 max.
B	1.585 max.
C	.797 ± .010
C ₁	1.016 ± .188
D ₁	.283 ± .062
E	.305 ± .010 O.D. Anode Terminal
E ₁	.151 ± .003 O.D. Coaxial Output R F Terminal
F	.425 max.
G	.865 ± .015 O.D. Grid Terminal
H	45° ± 7°
J	.275 ± .005 Cavity Center To Eyelet
K	.980 max.
L	.305 ± .010 O.D. Cathode Terminal
M	.400 max.
N	.040 max.
N ₁	.080 max. Untinned
P	.220 ± .020
Q	.025
S	.115 ± .040 Heater Terminal Tips
T	.270 max.
U	.250 max.
V	.200 min.
V ₁	.325 min.
W	.200 min.
W ₁	.150 max.
Y	.016 ^{+0.002} / _{-.001} Dia.
Z	.040 ± .001 O.D.