

**CHARACTERISTICS**

**GENERAL DATA**

Focusing Method	Electrostatic
Deflection Method	Magnetic
Deflection Angles (Approx.)	
Horizontal	81 Degrees
Diagonal	92 Degrees
Vertical	66 Degrees
Phosphor	Aluminized P4
Fluorescence	White
Persistence	Short to Medium
Faceplate	Bonded Shield
(Gray Filter Glass Safety Plate Laminated Directly to Face of Tube)	
Light Transmittance of Faceplate Assembly (Approx.)	40 Percent
23ATP4: External Surface of Safety Plate Treated to Reduce Specular Reflection	

**ELECTRICAL DATA**

Heater Voltage	6.3 Volts	
Heater Current	0.60 ± 5 % Ampere	
Heater Warm-up Time <sup>1</sup>	11 Seconds	
Direct Interelectrode Capacitances (Approx.)		
Cathode to All Other Electrodes	5 μmf	
Grid No. 1 to All Other Electrodes	6 μmf	
External Conductive Coating to Anode <sup>2</sup>	2500 μmf	Max.
	2000 μmf	Min.

**MECHANICAL DATA**

Minimum Useful Screen Dimensions (Maximum Assured)		
Height	15 1/4 Inches	
Width	19 5/16 Inches	
Diagonal	22 5/16 Inches	
Area	282 Sq. Inches	
Neck Length	5 5/8 ± 3/16 Inches	
Overall Length	18 7/16 ± 7/16 Inches	
Bulb	J187D or J187G	
Safety Plate		
23ANP4	FP198A	
23ATP4	FP198B	
Bulb Contact		
(Recessed Small Cavity Cap)	J1-21	
Base	B6-203	
Basing	12L	
Weight (Approx.)	34 1/2 Pounds	

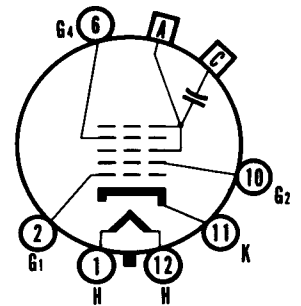
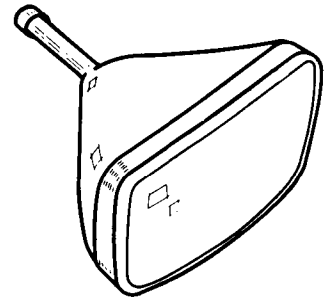
**RATINGS**

**MAXIMUM RATINGS (Design Maximum Values) Cathode Drive Service<sup>3</sup>**

Maximum Anode Voltage	25,000 Volts	dc
Minimum Anode Voltage	16,000 Volts	dc
Grid No. 4 Voltage (Focusing Electrode)	-550 to +1100 Volts	dc
Maximum Grid No. 2 Voltage	70 Volts	dc
Minimum Grid No. 2 Voltage	40 Volts	dc
Cathode Voltage		
Negative Bias Value	0 Volts	dc
Negative Peak Value	2 Volts	
Positive Bias Value	100 Volts	dc
Positive Peak Value	140 Volts	
Peak Heater-Cathode Voltage		
Heater Negative with Respect to Cathode		
During Warm-up Period not to Exceed 15 Seconds	410 Volts	
After Equipment Warm-up Period	180 Volts	
Heater Positive with Respect to Cathode	180 Volts	

**QUICK REFERENCE DATA**

Television Picture Tube  
23" Direct Viewed  
Rectangular Glass Type  
Spherical Faceplate  
Bonded Shield  
Gray Filter Glass  
Aluminized Screen  
Electrostatic Focus  
92° Magnetic Deflection  
No Ion Trap  
External Conductive Coating  
Low Grid No. 2 Voltage  
23ATP4: Anti-Reflection Treated



12-L

**SYLVANIA ELECTRONIC TUBES**

A Division of  
Sylvania Electric Products Inc.

**PICTURE TUBE OPERATIONS**

SENECA FALLS, NEW YORK

Prepared and Released By The  
TECHNICAL PUBLICATIONS SECTION  
EMPORIUM, PENNSYLVANIA

MARCH, 1962

PAGE 1 OF 2

File Under

TELEVISION PICTURE TUBES

**TYPICAL OPERATING CONDITIONS (Cathode Drive Service)<sup>3</sup>**

Anode Voltage . . . . .	20,000 Volts	dc
Grid No. 4 Voltage for Focus . . . . .	0 to +500 Volts	dc
Grid No. 2 Voltage . . . . .	50 Volts	dc
Grid No. 1 Voltage Required for Cutoff <sup>4</sup> . . . . .	+36 to +54 Volts	dc

**CIRCUIT VALUES**

Grid No. 1 Circuit Resistance . . . . . 1.5 Megohms Max.

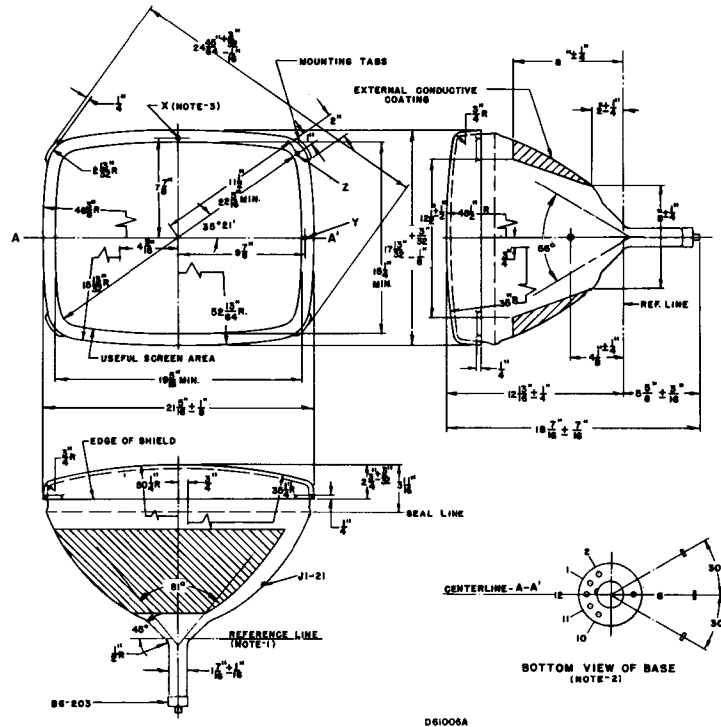
**NOTES:**

1. Heater warm-up time is defined as the time required for the voltage across the heater to reach 80 % of the rated heater voltage after applying four (4) times rated heater voltage to a circuit consisting of the tube heater in series with a resistance equal to three (3) times the rated heater voltage divided by the rated heater current.
2. External conductive coating must be grounded.
3. Unless otherwise specified, voltages are positive and measured with respect to Grid No. 1.
4. Visual extinction of focused raster. Extinction of stationary focused spot will require that these values be about 5 volts more positive.

**WARNING:**

X-ray radiation shielding may be necessary to protect against possible danger of personal injury from prolonged exposure at close range if this tube is operated at higher than the manufacturer's Maximum Rated Anode Voltage or 16,000 volts, whichever is less.

**OUTLINE**



**DIAGRAM NOTES:**

1. Reference line is determined by Plane C-C' of JEDEC No. 116 Reference Line Gauge, when the gauge is seated against the bulb.
2. Base Pin No. 6 aligns with horizontal center line (A-A') within 30° and is on same side as anode contact, J1-21.
3. Planes perpendicular to tube axis and passing through Points X, Y and Z are located as follows:  
 Plane tangent to crown of face to Plane of X: .758" Nom.  
 Plane of X to Plane of Y = .463" ± .030".  
 Plane of X to Plane of Z = .970" ± .030".